



## SIR KENNETH PRESTON TROPHY 22-23 AUGUST 2020

**ORGANISING AUTHORITY  
ROYAL YACHT SQUADRON  
COWES, UK**

# NOTICE OF RACE

*(Amended 05/08/2020)*

*The notation '[DP]' in a rule in the Notice of Race means that the penalty for a breach of that rule may, at the discretion of the protest committee, be less than disqualification.*

### 1. RULES

The regatta will be governed by:

- 1.1 The rules as defined in the Racing Rules of Sailing 2017 - 2020(RRS).
- 1.2 Sails may be borrowed for this event in accordance with Etchells Class Rules C 10.3 (i).
- 1.3 The Class will provide Bow Sticker Numbers, which shall be displayed 52.5cm back from the bow and 6cm from the shearline. Single digit numbers (e.g."2") must display the leading zero (e.g."02"). [DP]
- 1.4 Notices to Mariners for the Ports of [Southampton](#), [Portsmouth](#) and [Cowes](#). [DP]
- 1.5 Non-owners may compete in loaned boats provided that the boat is insured in accordance with this NoR.
- 1.6 All crews are required to follow all the latest Covid-19 guidance from NHS England and the Government.
- 1.7 All crews should also follow the latest [RYA Guidance on sailing & racing with participants from different households](#) during COVID-19 in England.

### 2. ADVERTISING

- 2.1 Advertising is permitted in accordance with Class Rules and World Sailing Regulation 20.
- 2.2 In accordance with Regulation 20.4.1 the Organising Authority may require boats to display advertising. [DP]

### 3. ELIGIBILITY AND ENTRY

- 3.1 The event is open to boats of the International Etchells Class whose owners and crews are current members of the

Class Association unless the Cowes Etchells Committee has agreed dispensation. [DP]

- 3.2 Eligible boats may enter by completing the entry form on the Yacht Scoring Website and paying the entry fee. [www.yachtscoring.com](http://www.yachtscoring.com).

- 3.3 To enter, the skipper of each boat shall complete and submit an 'Event Personal Declaration' in the 24 hours immediately prior to the event. This form will available on the Yacht Scoring Website. Competitors who answer 'False' to any of the questions shall not take part in the event. WITHOUT EXCEPTION, FAILURE TO COMPLY WITH THIS REQUIREMENT WILL RESULT IN BOATS BEING SCORED DNC.

### 4. CLASSIFICATION

- 4.1 The Regatta is open to all sailors regardless of World Sailing Sailor Classification (WSSC).
- 4.2 Boats wishing to be eligible for the Corinthian Prize shall provide valid WSSC Group 1 IDs for all crew on their entry form. Sailors who fail to provide a valid WSSC Group 1 ID by 1700 on the 21 August will be deemed to be Group 3.

### 5. FEES

- 5.1 The entry fee is £170.

### 6. SCHEDULE OF RACING

- 6.1 The intention of the Race Committee is to run six (6) races over the two days of the regatta.
- 6.2 The Race Committee intends to run no more than three races each day. However additional races may be sailed in order to complete the programme because of weather or other reasons and will be advised by 0900 on the affected day.
- 6.3 On the last day of racing, no warning signal will be made after 1500.
- 6.4 Schedule

DAY HWP (BST)	BRIEFING	FIRST WARNING SIGNAL	NOTES
Sat 22 Aug HW 1440 4.9m	0900	1025	WhatsApp Briefing Race 1. Race 2 & 3 asap after each finish.
Sun 23 Aug HW 1520 4.8m		1025	Race 4. Race 5 & 6 asap after each finish.

### 7. MEASUREMENT

- 7.1 Each boat shall be in possession of a valid Measurement Certificate.

### 8. SAILING INSTRUCTIONS

- 8.1 Sailing Instructions (SIs) will be available on the Royal Yacht Squadron website and Yacht Scoring website two weeks

All correspondence should be directed to:

The Royal Yacht Squadron, The Castle, Cowes, UK, PO31 7QT. Tel: 01983 292191, Email: [mail@rys.org.uk](mailto:mail@rys.org.uk)

before the event and in printed format at the RYS Lodge from Friday 7 August. Copies will also be available at the briefing.

## 9. VENUE

- 9.1 Racing will take place from a Committee Vessel in the Central and Eastern Solent.
- 9.2 The approximate position of the Committee Vessel will be announced by VHF Radio and at the briefing.
- 9.3 The Race Office and Official Noticeboard will be at the Royal Yacht Squadron. Notices may also be posted at CYH.

## 10. COURSES

- 10.1 The format for racing will be predominantly windward/leeward. See Addendum A.
- 10.2 The Race Committee may decide to run courses using laid and/or fixed racing or navigation marks, which will be announced by VHF Radio.
- 10.3 A list of marks, two-character codes and chartlets will be issued with the SIs.

## 11. PENALTY SYSTEM

- 11.1 RRS 44.1 is changed so that a boat may take a One-Turn Penalty when she may have broken one or more rules of Part 2 or rule 31 in an incident while racing. However, when she may have broken one or more rules of Part 2 while in the zone around a mark other than a starting mark, her penalty shall be a Two-Turns Penalty.

## 12. SCORING

- 12.1 The Low Point System of Appendix A will apply.
- 12.2 One race shall be completed to constitute a series for the Sir Kenneth Preston Trophy.
- 12.3 When one (1) to four (4) races have been completed a boats series score shall be the total of all their scores.
- 12.4 When five (5) or more races have been completed, a boat's score will be the total of her race scores excluding her worst score.
- 12.5 This regatta forms part of the Champion of Champion Series as described on the Etchells Class website.

## 13. SUPPORT BOATS

- 13.1 All support boats must carry marine VHF radios and agree to assist the Race Committee if directed to do so. *[DP]*
- 13.2 Support boats shall stay outside areas where boats are racing from the time of the preparatory signal for each start thereafter until all boats have finished or retired or the Race Committee signals a postponement, general recall or abandonment. *[DP]*

## 14. BERTHING

- 14.1 Regatta berthing is the responsibility of each boat and is not included in the entry fee. Visiting boats should contact [Cowes Yacht Haven](#) or [Shepards Wharf Marina](#) for berthing reservations.

## 15. HAUL OUT RESTRICTIONS

- 15.1 All boats shall be afloat by 1730 the day before the first race. *[DP]*
- 15.2 Boats shall not be hauled out during the regatta except with and according to the terms of prior written permission of the race committee. *[DP]*

## 16. DIVING EQUIPMENT AND PLASTIC POOLS

- 16.1 Underwater breathing apparatus and plastic pools or their equivalent shall not be used around competing boats between the preparatory signal of the first race and the end of the Regatta. *[DP]*

## 17. RADIO COMMUNICATION

- 17.1 All Yachts shall carry a Marine Band VHF Radio capable of receiving all International Channels.
- 17.2 VHF Radio Channels used for course information and announcements will be identified in the Sailing Instructions and on the Etchells WhatsApp Group Chat Briefing.
- 17.3 Except in an emergency, a boat shall neither make radio transmissions while racing nor receive radio communications not available to all boats. This restriction applies to all communication devices except to any Tracker Devices used. *[DP]*

## 18. MEDIA

Competitors automatically grant to the Organizing Authority, without payment, the right in perpetuity to make, use and show any motion pictures, still pictures and live, taped or filmed television of or relating to the event.

## 19. PRIZES

- 19.1 Due to the current Covid 19 restrictions in place, there will be no official prizegiving and prizes may be collected from the RYS Office in the week following the event.
- 19.2 Prizes will be awarded for the first, second and third boats in the series.
- 19.3 There will be a prize for the highest placed "Youth" boat. For the purposes of clarity, a youth boat is defined as one where all crew members are aged 25yrs or under on 1/1/20.
- 19.4 In addition, a Corinthian Prize will be awarded to the highest placed boat whose helm and crew are all World Sailing Sailor Classification Group 1.
- 19.5 Those crews wishing to be eligible for the Corinthian Prize shall register their Corinthian status on the Yacht Scoring website prior to the start of the event.

## 20. CHARTERED OR LOANED BOATS

- 20.1 RRS G3 applies.

## 21. ARMORIAL, BURGEE AND LOGO

The Royal Yacht Squadron (RYS) and Royal Yacht Squadron Racing (RYSR) Armorial, Burgees and all other associated logos shall not be used by any club or individual without the prior written permission of the RYS. *[DP]*

**22. PRIVACY**

The Royal Yacht Squadron, in compliance with the General Data Protection Regulations 2018 (GDPR), will use information provided by competitors for the purposes of RYS and RYSR event management only. This data will be held in compliance with the GDPR and will not be shared with any third parties or used for marketing purposes other than contacting competitors by email, post, SMS and telephone with information regarding this event or future events. Competitors will be required to provide their specific consent to this on their entry form.

**23. INSURANCE**

All entrants shall be covered by a minimum Third-Party Liability indemnity of £3 million and declare that such cover will be maintained throughout the event.

**24. RISK STATEMENT**

24.1 Rule 4 of the Racing Rules of Sailing states: "The responsibility for a boat's decision to participate in a race or to continue racing is hers alone."

24.2 Sailing is by its nature an unpredictable sport and therefore involves an element of risk. By taking part in the event, each competitor agrees and acknowledges that:

- (a) They are aware of the inherent element of risk involved in the sport and accept responsibility for the exposure of themselves, their crew and their boat to such inherent risk whilst taking part in the event;
- (b) They are responsible for the safety of themselves, their crew, their boat and their other property whether afloat or ashore;
- (c) They accept responsibility for any injury, damage or loss to the extent caused by their own actions or omissions;
- (d) Their boat is in good order, equipped to sail in the event and they are fit to participate;
- (e) The provision of a race management team, patrol boats, and other officials and volunteers by the event organiser does not relieve them of their own responsibilities;
- (f) The provision of patrol boat cover is limited to such assistance, particularly in extreme weather conditions, as can be practically provided in the circumstances;
- (g) It is their responsibility to familiarise themselves with any risks specific to this venue or this event drawn to their attention in any rules and information produced for the venue or event and to attend any competitor or safety briefing held for the event; <sup>[11]</sup><sub>[SEP]</sub>
- (h) They are responsible for ensuring that their boat is equipped and seaworthy so as to be able to face extremes of weather; that there is a crew sufficient in number, experience and fitness to withstand such weather; and that the safety equipment is properly maintained, stowed and in date and is familiar to the crew.

**24.3 COVID Statement**

- (a) By taking part in any of the events covered by this Notice of Race, each competitor agrees and

acknowledges that they are responsible for complying with any regulations in force from time to time in respect of COVID-19 and for complying with the Royal Yacht Squadron COVID-19 procedures.

- (b) The penalty for a breach of this rule may, at the discretion of the Protest Committee, be less than disqualification. Boats may not protest for breaches of this rule. This changes rule 60.1(a). (DP)

**25. FURTHER INFORMATION**

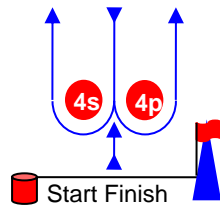
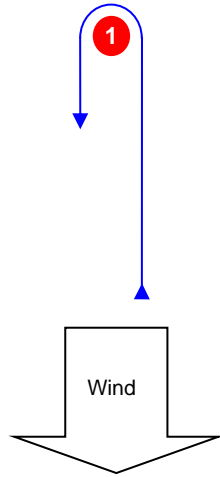
- 25.1 Further information requests or completed entries should be sent to the address below.

**NOTICE OF RACE ENDS****1. SOCIAL ARRANGEMENTS**

- (a) Due to the current Government Covid 19 restrictions the RYS/Etchells Social event has been cancelled.

**Course Illustrations – Windward Leeward**

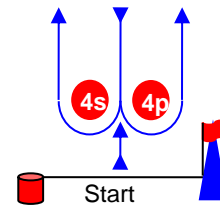
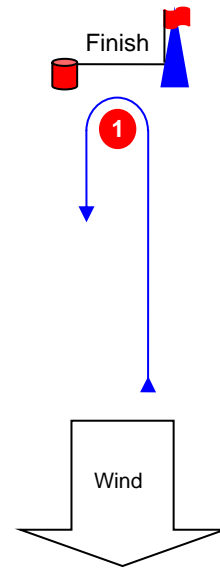
**L**



**Course: Leeward finish**

Signal	Mark Rounding Order
<b>L2</b>	Start – 1 – 4s/4p – 1 – Finish
<b>L3</b>	Start – 1 – 4s/4p – 1 – 4s/4p – 1 – Finish
<b>L4</b>	Start – 1 – 4s/4p – 1 – 4s/4p – 1 – 4s/4p – 1 – Finish

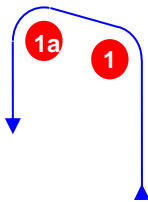
**W**



**Course: Windward Finish**

Signal	Mark Rounding Order
<b>W2</b>	Start – 1 – 4s/4p – Finish
<b>W3</b>	Start – 1 – 4s/4p – 1 – 4s/4p – Finish
<b>W4</b>	Start – 1 – 4s/4p – 1 – 4s/4p – 1 – 4s/4p – Finish

**LA / WA**



**Course: Windward/leeward with offset mark 1a**

Signal	Mark Rounding Order
<b>LA2</b>	Start – 1 – 1a – 4s/4p – 1 – 1a – Finish
<b>LA3</b>	Start – 1 – 1a – 4s/4p – 1 – 1a – 4s/4p – 1 – 1a – Finish
<b>LA4</b>	Start – 1 – 1a – 4s/4p – 1 – 1a – 4s/4p – 1 – 1a – 4s/4p – 1 – 1a – Finish
<b>WA2</b>	Start – 1 – 1a – 4s/4p – Finish
<b>WA3</b>	Start – 1 – 1a – 4s/4p – 1 – 1a – 4s/4p – Finish
<b>WA4</b>	Start – 1 – 1a – 4s/4p – 1 – 1a – 4s/4p – 1 – 1a – 4s/4p – Finish

All correspondence should be directed to:

The Royal Yacht Squadron, The Castle, Cowes, UK, PO31 7QT. Tel: 01983 292191, Email: [mail@rys.org.uk](mailto:mail@rys.org.uk)